



Technical Bulletin #35 (1.0)

Subject: Board replacement by technologies

TruBalance, Classic and Engineered technologies

Necessary Tools:

- 3M Tape,
- Black marker,
- Circular saw,
- Chisel,
- Safety goggles,
- Wood glue,
- Repair kit,
- Hammer,
- Block planer,
- Cardboard or equivalent for floor protection
- Sandpaper,
- Vacuum,
- Straight edge.

Always use safety goggles and proper care when using a saw. Make sure you have an appropriate replacement board before removing the original. For a better result, use any planks left from the original installation to make any repair.

The images below are all example for the TruBalance technology, image may differ by technology.

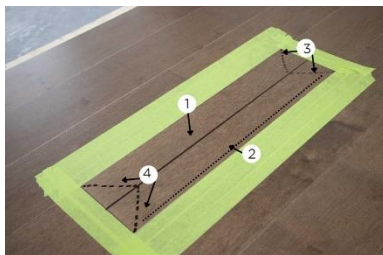
Step 1:

Adjust blade of circular saw to slightly thicker than board.



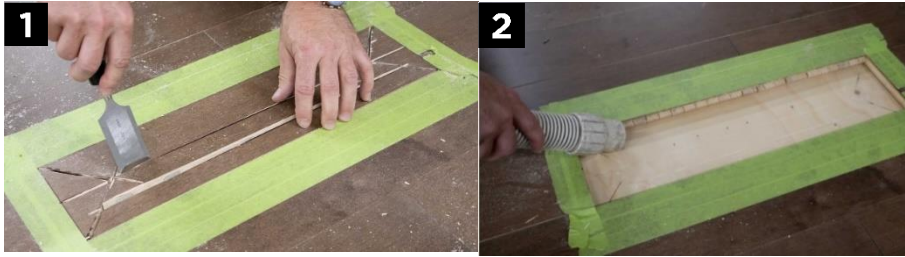
Step 2:

Apply 3M masking tape to protect surrounding boards and use cardboard for any other exposed area. Use a marker to identify your cuts. Start with 2 cuts: first one in the central one (#1), the second is a cut 1" from the groove side (#2). Then you need to cut the two diagonals on the short side (#3 & 4). Never cut towards your body.



Step 3:

Remove middle piece first with chisel (#1), then the other pieces, remove old fasteners or any adhesive residue and vacuum the opening (#2).

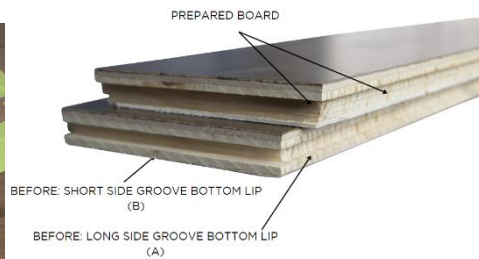
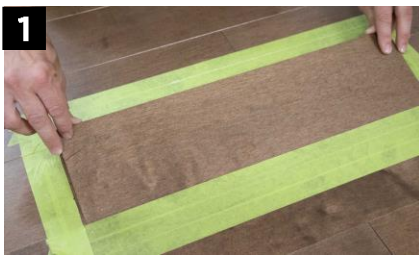


Step 4:

Measure the exact length of the replacing board that you need.

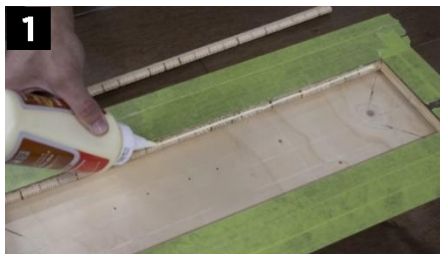
Step 5:

Preparing the new board: test fit your replacement board ensuring it fits nice and tight lengthwise (#1). Rip the long side groove bottom lip (A) and short side groove bottom lip (B). Then, cut the short side tongue (C) using a small angle on the saw when doing it ensures not removing the finished bevel and eases the installation of the board. You may need to sand/angle the bottom of the ends a little so they will slide into position easier. It should be a tight fit.



Step 6:

Spread the adhesive on tongues on the sides and ends (#1), as well as on the subfloor. Fold down the board firmly in place (#2). Place a heavy object that rests on the new board make sure it covers it all and ensure board stays flush with surrounding boards (#3). Once glue has set, remove tape.



Lock technology (2G™ angling system) 4-5/16" & 5"

Necessary Tools:

- 3M Tape,
- Black marker,
- Circular saw,
- Chisel,
- Safety goggles,
- Wood glue,
- Repair kit,
- Hammer,
- Block planer,
- Cardboard or equivalent for floor protection
- Sandpaper,
- Vacuum,
- Straight edge.

Always use safety goggles and proper care when using saw. Make sure you have an appropriate replacement board before removing the original. For a better result, use any planks left from the original installation to make any repair.

Step 1: Adjust blade of circular saw to slightly thicker than board.



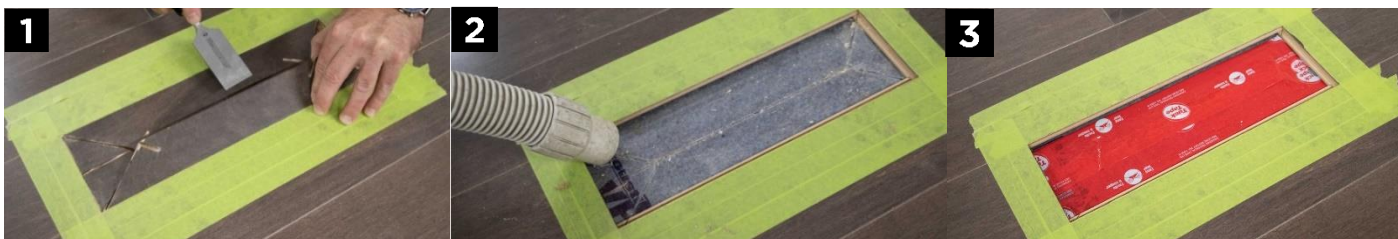
Step 2:

Apply 3M masking tape to protect surrounding boards and use cardboard for any other exposed area. Use a marker to identify your cuts. You need to make 3 cuts: 1 in the middle (a) and two diagonal cuts connecting those lines (b and c). Never cut towards your body.



Step 3:

Remove middle piece first with chisel then other pieces (#1), lift out the damaged board carefully to avoid damaging neighboring boards and vacuum the opening (#2). If the underlayment is damaged, add tape to fix if needed (#3).

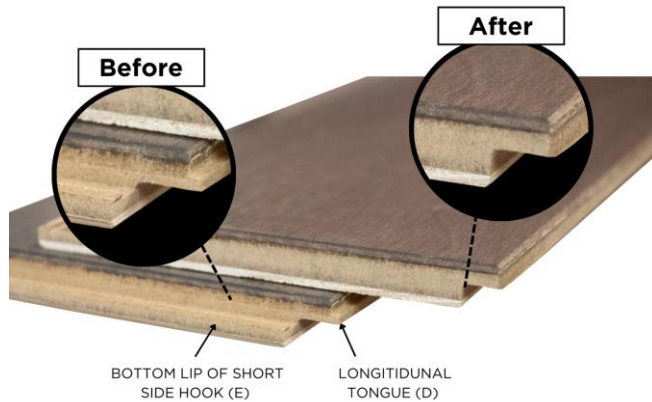


Step 4:

Check the new board against opening.

Step 5:

Preparation of the replacement board. Important: do not cut the upper side hook make sure you choose the board accordingly and cut the opposite short side if needed. Measure the exact length of the replacing board that you need. Remove the longitudinal tongue (D) and bottom lip of short side end (E).



- Check new board against opening. Prepare the new board to make sure it fits and replicate finish bevel with sandpaper and a matching repair kit if necessary.
- Apply wood glue to groove of board on floor then insert board on floor. Pivot board into its final position.



- Remove all excess glue that could remain visible on the surface of the board.



- Place sufficient weight on board and adjacent pieces to hold replacement flush until the glue has set.



Lock technology Floated Floorboard Replacement 6 1/2" (5G)

Necessary Tools:

- 3M Tape,
- Black marker,
- Circular saw,
- Chisel,
- Safety goggles,
- Wood glue,
- Repair kit,
- Hammer,
- Block planer,
- Cardboard or equivalent for floor protection
- Sandpaper,
- Vacuum,
- Straight edge.

Always use safety goggles and proper care when using saw. Make sure you have an appropriate replacement board before removing the original. For a better result, use any planks left from the original installation to make any repair.

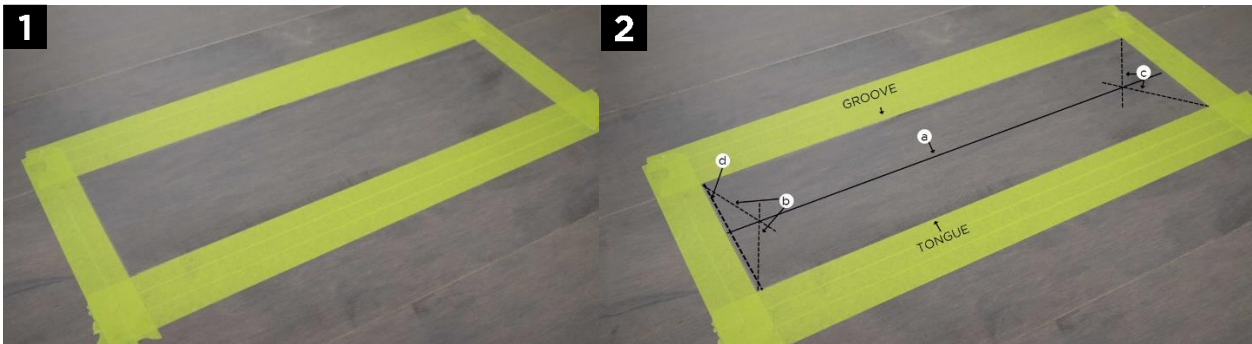
Step 1:

Adjust blade of circular saw to slightly thicker than board.



Step 2:

Apply 3M masking tape to protect surrounding boards (#1) and use cardboard for any other exposed area. Use a marker to identify your cuts as per drawing (#2).



Step 3:

Make your cuts following picture above. Never cut towards your body.

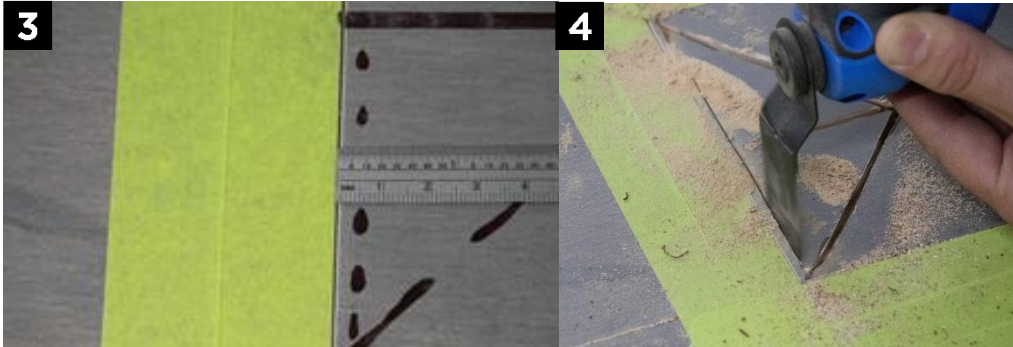
- One long cut in the center of the board (a).



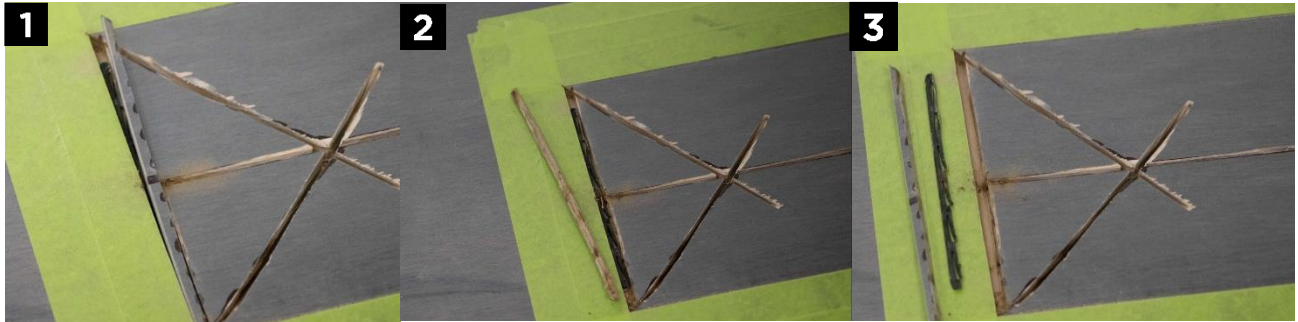
- Two cuts at both ends that will form a triangle (b & c).



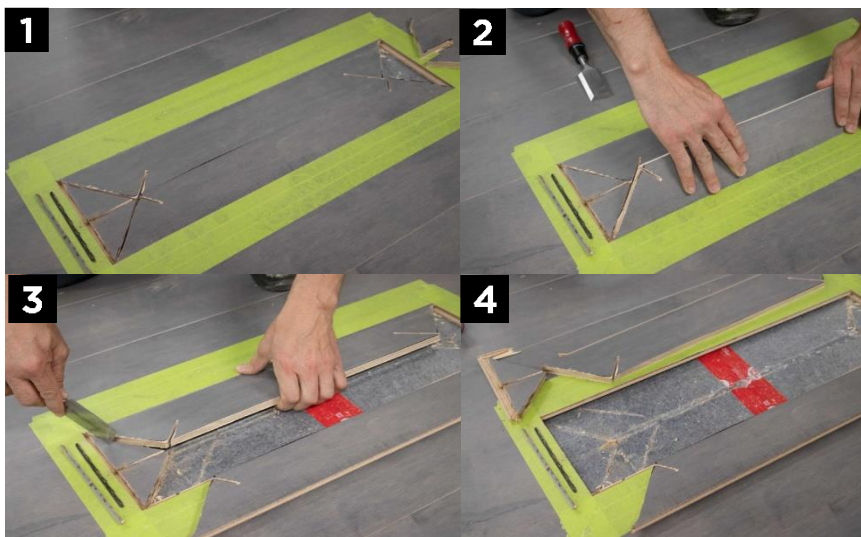
- Next, make one long cut near the groove side, about 1/8 (3-4 mm) from side (d).



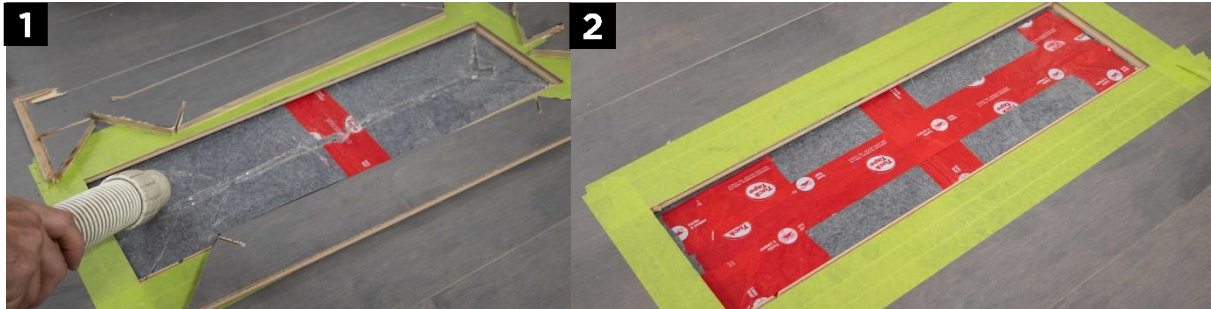
- Remove the piece of wood and the small plastic strip (from #1 to 3).



- Follow pictures below from (#1 to 4) to remove all the cut pieces.

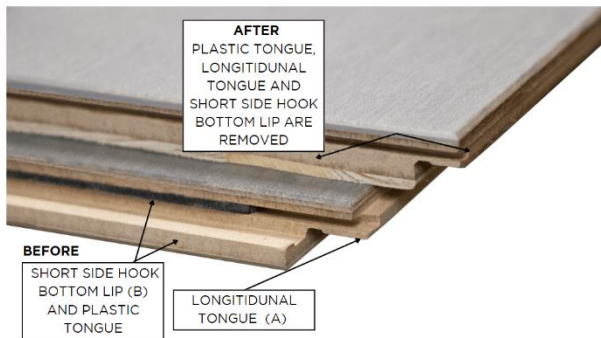


- Vacuum the opening. If the membrane is damaged add some tape to fix, if needed.



Step 4:

- Important: do not cut the upper side hook make sure you choose the board accordingly. Remove longitudinal tongue (A) and groove end (B) of replacement board with the plastic tongue.



Step 5:

- Apply wood glue to groove of board on floor then insert board on floor. Pivot board into its final position. Remove all excess glue that is visible on the surface.



- Place sufficient weight on board and adjacent pieces to hold replacement plank flush until the glue has set.



Mirage Technical Service Department
1-800-463-1303
technical@miragefloors.com